



ASTON CLOSE T



REZIDE
GROUP

£325,000
ASTON CLOSE, BARROW UPON SOAR,



Nestled within the tranquil embrace of a quiet cul de sac in the coveted Poppyfields area of Barrow Upon Soar, this exceptional three-bedroom detached home is a testament to both style and quality. Built by renowned developers Jelson, this property enjoys the enviable position of a corner plot, boasting a harmonious blend of modern living and tasteful upgrades that elevate it to a league of its own.



Upon crossing the threshold, you are greeted by an inviting entrance hall that sets the tone for what lies ahead. The ground floor reveals a convenient WC, a functional kitchen diner, and a spacious lounge diner. The layout seamlessly flows, offering versatility and ample space for both relaxation and culinary delights.

Ascending the staircase to the first floor, a well-lit landing connects to three bedrooms, with the master bedroom benefiting from an en suite bathroom. Each bedroom exudes comfort and tranquility, providing a personal sanctuary for every member of the household. The contemporary bathroom is a work of art, offering both practicality and indulgence.

This residence has been meticulously maintained and thoughtfully upgraded to ensure modern comforts. Gas central heating keeps the home cozy in winter, while double glazing enhances energy efficiency. Double doors open onto the rear garden, revealing a meticulously







landscaped oasis, with a lush expanse of lawn, a paved patio area with a convenient side gate, perfect for al fresco dining or relaxation.

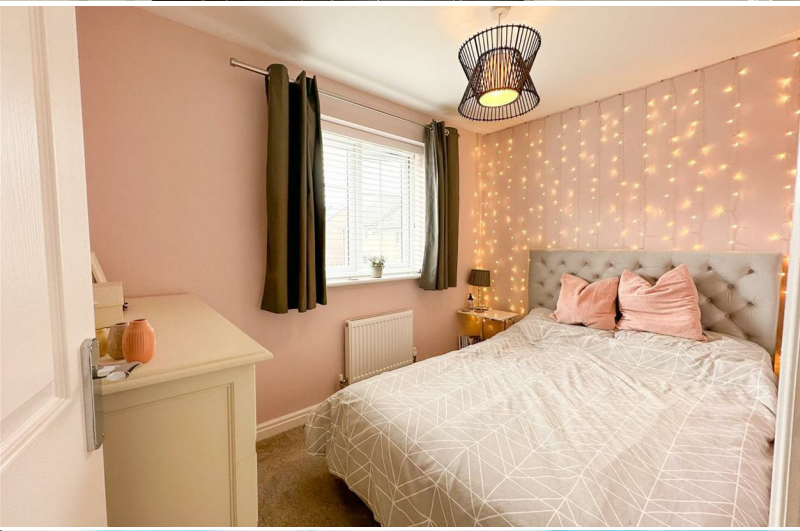


The tandem driveway leads to a single garage, providing secure parking and storage. Inside, appealing floor coverings add warmth and character, while the fitted kitchen appliances are a testament to the attention to detail. Built-in storage solutions ensure clutter remains hidden, allowing the aesthetic beauty of the home to shine.



Location-wise, this property is a winner. Close to local amenities, schools, and village shopping, it offers a lifestyle of convenience. Moreover, its strategic position provides easy



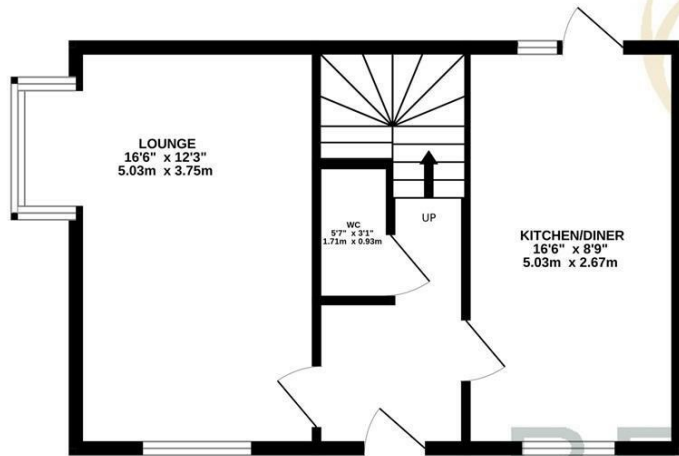


access to both local and major rail and road travel links, making it an ideal choice for those who value connectivity.

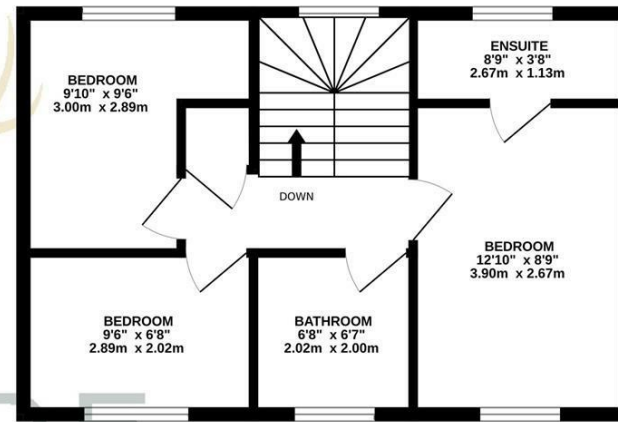
In summary, this three-bedroom detached home in the Poppyfields area of Barrow Upon Soar is a true gem. From its tranquil cul de sac location to its tasteful upgrades, this property offers a harmonious blend of modern living and convenience. Don't miss the opportunity to make this house your forever home.



GROUND FLOOR
422 sq.ft. (39.2 sq.m.) approx.



1ST FLOOR
409 sq.ft. (38.0 sq.m.) approx.



RESIDE
GROUP

TOTAL FLOOR AREA : 831 sq.ft. (77.2 sq.m.) approx.

Whilst every attempt has been made to ensure the accuracy of the floorplan contained here, measurements of doors, windows, rooms and any other items are approximate and no responsibility is taken for any error, omission or mis-statement. This plan is for illustrative purposes only and should be used as such by any prospective purchaser. The services, systems and appliances shown have not been tested and no guarantee as to their operability or efficiency can be given.
Made with Metropix ©2023

