



REZIDE  
GROUP



LOCKEYMEAD DRIVE, DESFORD,  
GUIDE PRICE £375,000



Welcome to Lockeymead Drive in Desford, an impressive four-bedroom detached corner house that exudes both elegance and practicality. With four double bedrooms, including a master ensuite, a spacious lounge, utility room, and a meticulously landscaped garden featuring an outdoor home office, this property is a haven for a growing family seeking ample space and modern comforts. Since its construction in 2015, it has graciously accommodated a family of five.

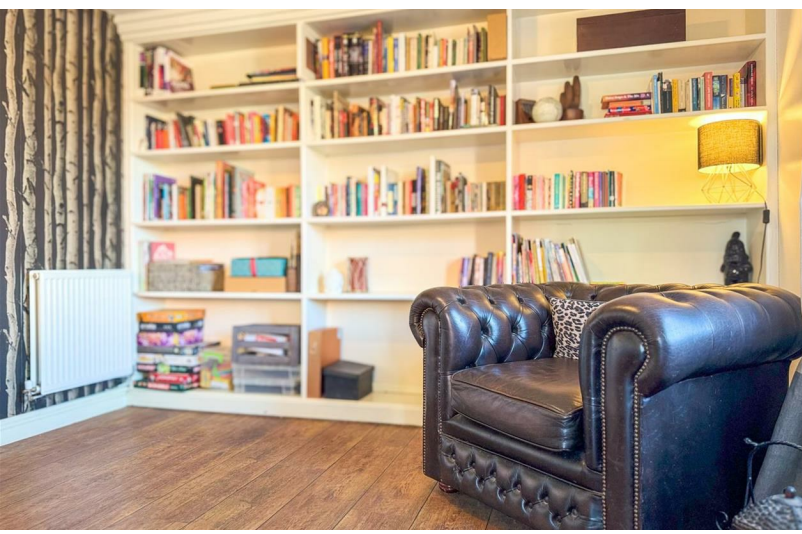


Step through the welcoming threshold into a bright and spacious entrance hall adorned with high-quality wood effect flooring, crisp white walls, luxurious light fittings, and a convenient storage cupboard beneath the staircase. The hall seamlessly connects to the lounge, a second reception room, the kitchen, and the staircase.

The lounge, characterised by tasteful wall coverings, striking flooring, a bespoke built-in bookcase, and a bay window flooding the room with natural light, offers a generously sized retreat. The thoughtfully designed ground floor layout allows for a seamless transition into the kitchen diner. Here, a dining area for up to five people coexists with a practical breakfast bar, complemented by ample storage, cream units, silver







handles, and mahogany-style work surfaces. The kitchen is equipped with integral appliances, including an oven, gas hob, dishwasher, and standing fridge/freezer. For additional storage and functionality, there's a utility room with more cupboards and space for a washer/dryer.

Completing the ground floor amenities is a beautifully presented downstairs WC, a versatile second reception room currently utilised as a meditation Zen room but adaptable for use as a child's playroom or office space.







Venturing upstairs reveals four double bedrooms, each uniquely designed for comfort. The master bedroom offers picturesque views of the local countryside, a triple built-in wardrobe, and its own ensuite shower room with modern tiling, a glass cubicle, pedestal basin, and toilet. Bedroom two features a unique shape, accommodating a large double wardrobe and a kingsize bed, while bedroom three offers a generous size with cream carpets and garden views. The smallest bedroom, though cozy, accommodates a double bed and boasts the best views from its window. A tastefully upgraded family bathroom with a glass crittall style shower screen, modern tiling, and a three-piece suite completes the upper level.

The meticulously landscaped rear garden boasts multiple seating areas, a timber-framed gazebo shelter, and silver birch trees for privacy. A standout feature is the custom-built insulated home office,







versatile enough to serve as a home gym, summer house, or garden bar, with an additional storage room acting as a shed.

The front and side of the property showcase a well-kept garden, inviting you into the residence, along with a driveway for two cars leading to the garage. The garage is equipped with power, lighting, and ample storage in the rafters, providing the finishing touch to this exceptional property.



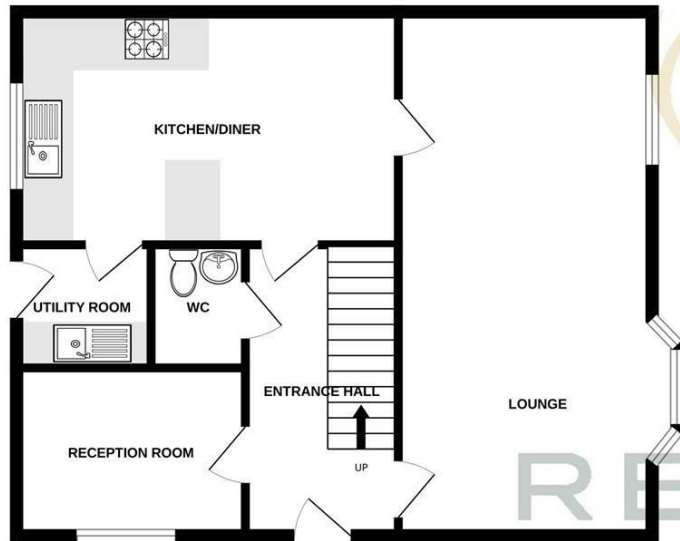




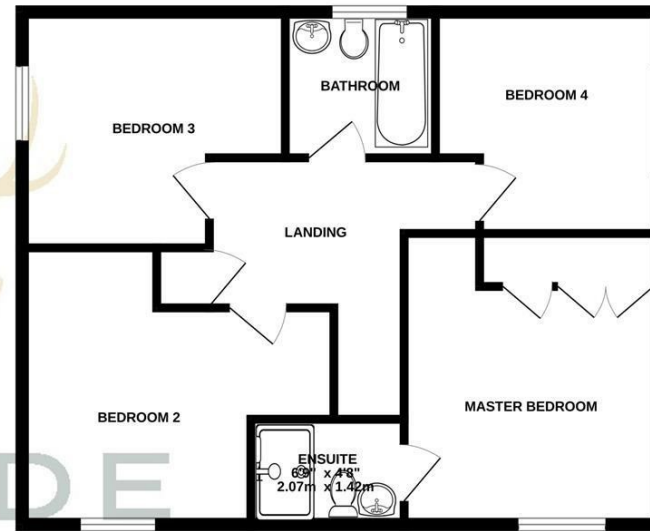




GROUND FLOOR  
658 sq.ft. (61.1 sq.m.) approx.



1ST FLOOR  
638 sq.ft. (59.3 sq.m.) approx.



REZIDE  
GROUP

TOTAL FLOOR AREA : 1296 sq.ft. (120.4 sq.m.) approx.

Whilst every attempt has been made to ensure the accuracy of the floorplan contained here, measurements of doors, windows, rooms and any other items are approximate and no responsibility is taken for any error, omission or mis-statement. This plan is for illustrative purposes only and should be used as such by any prospective purchaser. The services, systems and appliances shown have not been tested and no guarantee as to their operability or efficiency can be given.  
Made with Metropix ©2024

