



GUIDE PRICE £1,299,999

HOTON HILLS FARM, HOTON, CHARNWOOD



REZIDE
GROUP



Nestled in the serene countryside between the charming market town of Loughborough and the idyllic village of Hoton, Hoton Hills Farm is a captivating country residence that offers a unique blend of rural tranquility and modern living. This spectacular property comprises a beautifully appointed four-storey farmhouse with a separate annex, presenting an exceptional opportunity for a family to create enduring memories in a picturesque setting. Completely renovated by the current owners, Hoton Hills Farm is ready to welcome its new custodians with NO ONWARD chain.



HOTON HILLS
FARMHOUSE

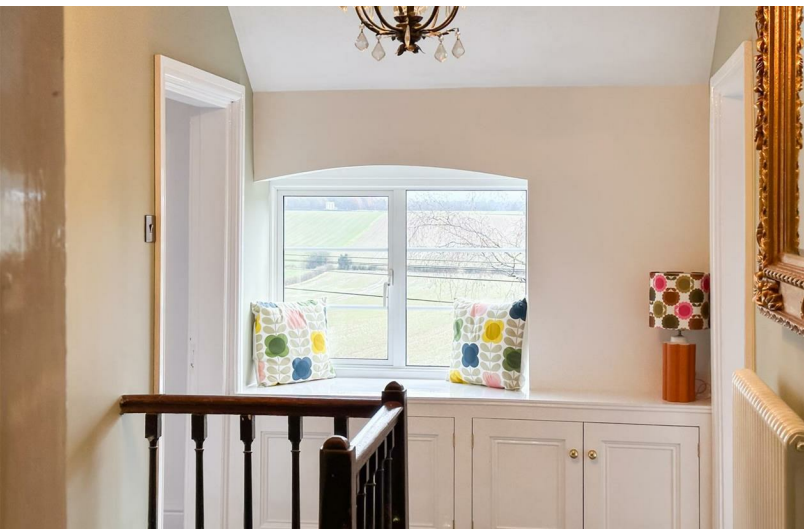
























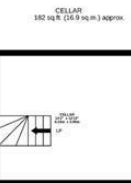






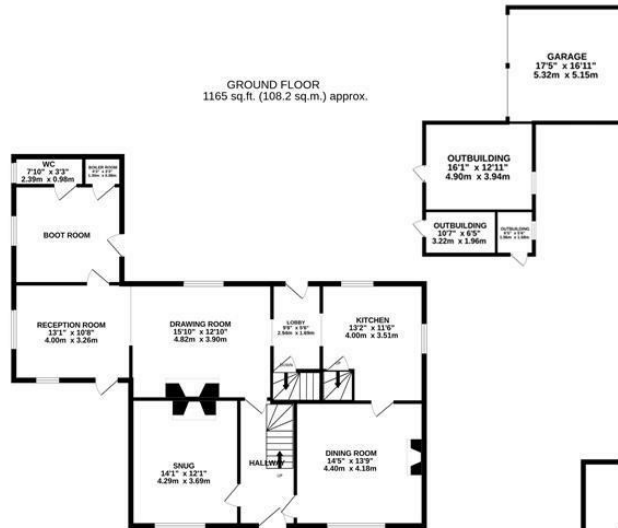
ANNEXE

TOTAL FLOOR AREA: 721 sq ft. (67.0 sq.m.) approx.
 Whilst every attempt has been made to ensure the accuracy of the floorplan contained here, measurements of doors, windows, rooms and all other areas are approximate and no responsibility is taken for any error, omission or mis-statement. This plan is for illustrative purposes only and should be used as such by any prospective purchaser. The services, systems and appliances shown have not been tested and no guarantee as to their operability or efficiency can be given.
 Made with Metropix 02022



CELLAR
182 sq ft. (16.9 sq.m.) approx.

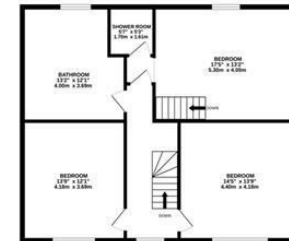
GROUND FLOOR
1165 sq.ft. (108.2 sq.m.) approx.



HOTON HILLS FARM

TOTAL FLOOR AREA: 3813 sq ft. (354.3 sq.m.) approx.
 Whilst every attempt has been made to ensure the accuracy of the floorplan contained here, measurements of doors, windows, rooms and all other areas are approximate and no responsibility is taken for any error, omission or mis-statement. This plan is for illustrative purposes only and should be used as such by any prospective purchaser. The services, systems and appliances shown have not been tested and no guarantee as to their operability or efficiency can be given.
 Made with Metropix 02022

2ND FLOOR
883 sq ft. (82.0 sq.m.) approx.



1ST FLOOR
1584 sq.ft. (147.2 sq.m.) approx.

