



REZIDE
GROUP

ASKING PRICE £165,000
MARSH ROAD, MOUNTSORREL, LOUGHBOROUGH



Presenting Marsh Road by Rezide Estate Agents—an exquisite two-bedroom apartment in Mountsorrel. Boasting a private garden, spacious kitchen/diner, inviting lounge, and two double bedrooms, this residence offers comfort and convenience. With a charming ambiance, modern amenities, and a sought-after location, swift action is advised to secure your viewing and avoid missing out on this exceptional opportunity. Contact us today and make Marsh Road your new home!



Nestled within the picturesque landscapes of Mountsorrel, Leicestershire, this charming 2-bedroom apartment offers a delightful blend of comfort, style, and convenience. Positioned on the first floor with private access, this residence boasts an inviting ambiance and a host of desirable features, making it an ideal choice for first-time buyers or astute landlords seeking a lucrative investment opportunity.

As you step inside, you're greeted by a welcoming porch area adorned with plush carpets and a convenient storage cupboard, setting the tone for the warmth and functionality that awaits beyond. Ascend the stairs to discover a well-appointed landing area, offering seamless access to each room within the apartment.

The heart of this home is undoubtedly the spacious lounge, where a cosy fireplace beckons you to unwind and relax after a long day. There is also a large window over looking the road and established blossoming cherry trees. Designed with modern living in mind, the apartment features two generously-sized double bedrooms, providing ample space for rest and rejuvenation.





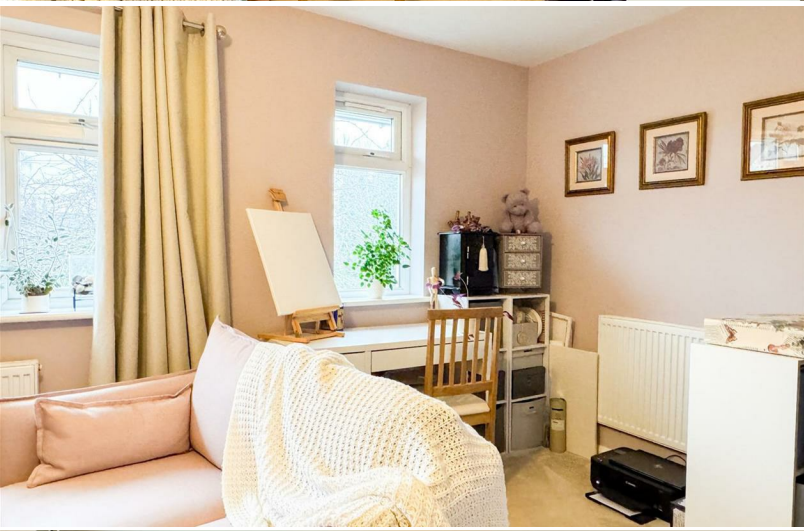


The master bedroom offers a tranquil retreat, while the second bedroom offers flexibility to accommodate guests or serve as a dedicated home office.

Prepare culinary delights with ease in the well-equipped kitchen diner, complete with ample counter space, sleek cabinetry, and a large pantry cupboard for convenient storage of groceries and essentials. From casual weeknight meals to festive dinner parties, this inviting space is perfect for both cooking and dining.

Completing this delightful residence is a modern bathroom, providing both style and functionality with its contemporary fixtures and soothing ambiance.





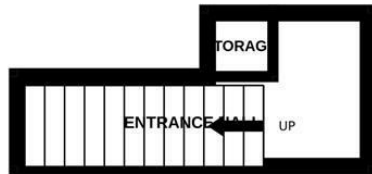
Step outside to discover your own private oasis—a gated garden boasting raised beds, where you can indulge your green thumb or simply bask in the serenity of outdoor living. Whether you're savouring morning coffee al fresco or enjoying leisurely weekend barbecues, this tranquil retreat offers endless possibilities for relaxation and enjoyment.

Beyond the boundaries of your new home, Mountsorrel beckons with its highly desirable amenities, including reputable schools, scenic parks, trendy eateries, and convenient transport links. With property prices in the area climbing rapidly, now is the perfect time to secure your slice of this sought-after locale.

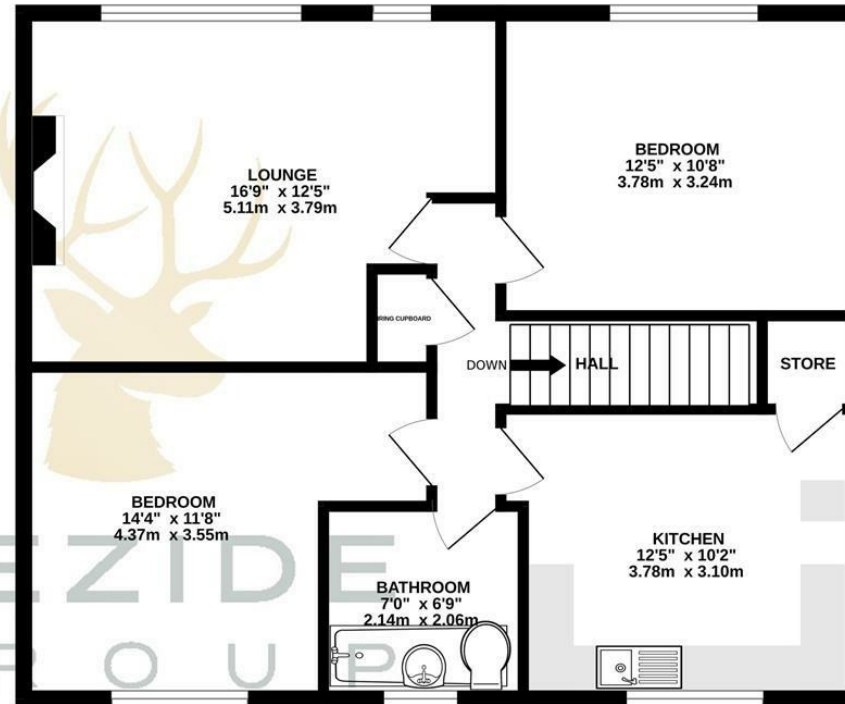
Don't miss out on the opportunity to make Marsh Road your own—schedule your viewing today and experience the charm and convenience of Mountsorrel living firsthand!



GROUND FLOOR



1ST FLOOR



Whilst every attempt has been made to ensure the accuracy of the floorplan contained here, measurements of doors, windows, rooms and any other items are approximate and no responsibility is taken for any error, omission or mis-statement. This plan is for illustrative purposes only and should be used as such by any prospective purchaser. The services, systems and appliances shown have not been tested and no guarantee as to their operability or efficiency can be given.
Made with Metropix ©2024

