



REZIDE
GROUP

ASKING PRICE £275,000
MELTON ROAD, THURMASTON, LEICESTER



Welcome to Melton Road, where you'll discover this charming three-bedroom semi-detached family home nestled in the heart of Thurmaston Village. Boasting a lounge, kitchen, master bedroom with ensuite, bathroom, spacious conservatory, and a beautiful garden, this property offers a wonderful living experience. Let's delve into the details of this fantastic home. For more information, please contact our office at (01509) 274474.



As you step into the spacious entrance hall, you're greeted by ample space for coats and shoes, along with built-in storage beneath the stairs. The hall features lush carpets and tasteful wall coverings, setting a welcoming tone. The generously sized lounge awaits, adorned with a large bay window that floods the room with natural sunlight. Before reaching the kitchen, you'll find a convenient downstairs lavatory/shower room, complete with a three-piece suite including a pedestal basin, corner shower cubicle with chrome mixer taps, and a freestanding toilet.

Entering the kitchen, you'll discover a well-equipped and practical space boasting ample storage cupboards, tiled floors, and room for a freestanding oven, hob, and fridge freezer. The modern Combi boiler is neatly tucked into the corner. Finally, on the ground floor, the spacious conservatory offers an ideal area to relax and dine while enjoying views of the well-kept garden.

Heading upstairs, you'll find a bright and airy landing space illuminated

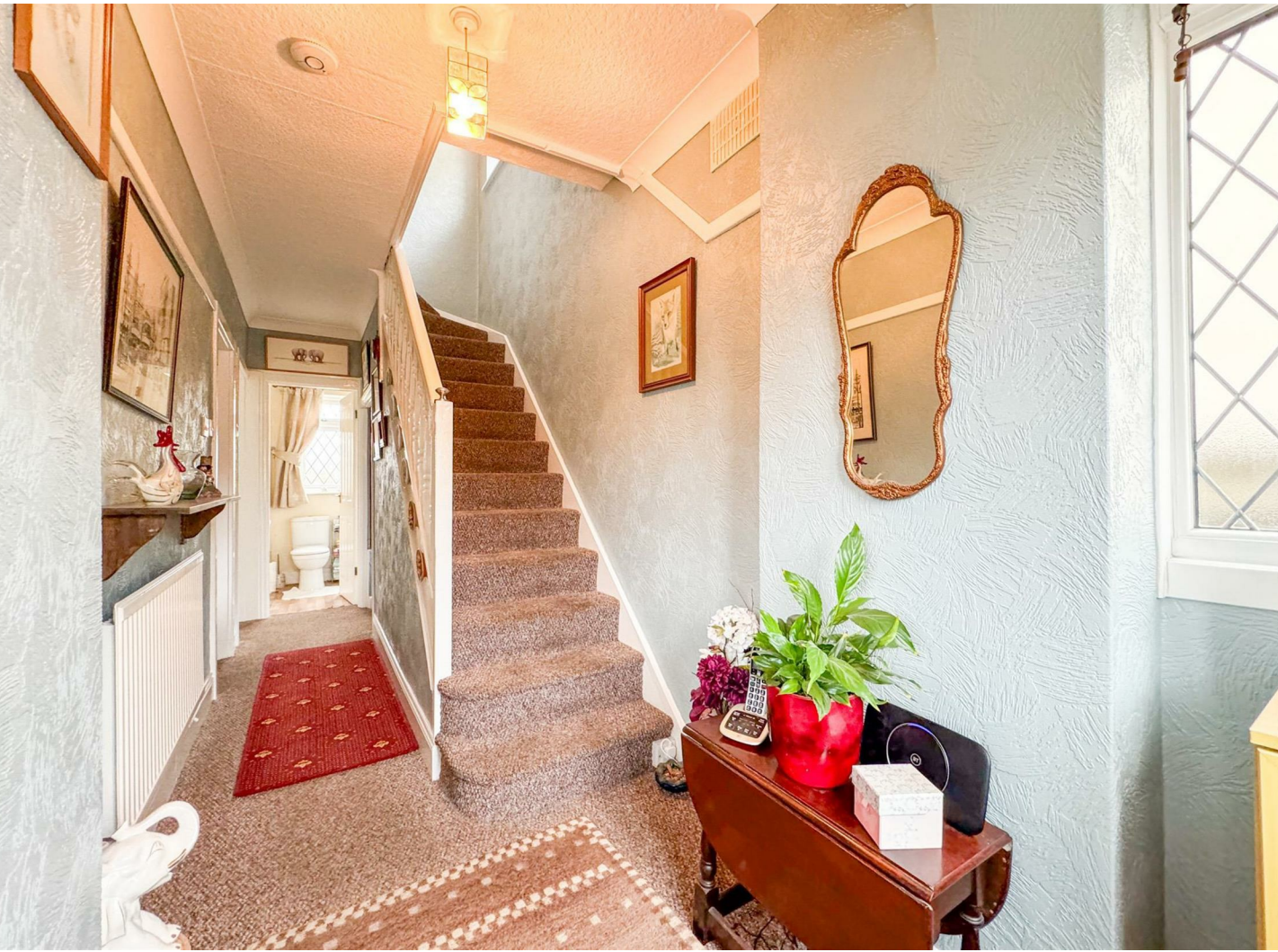
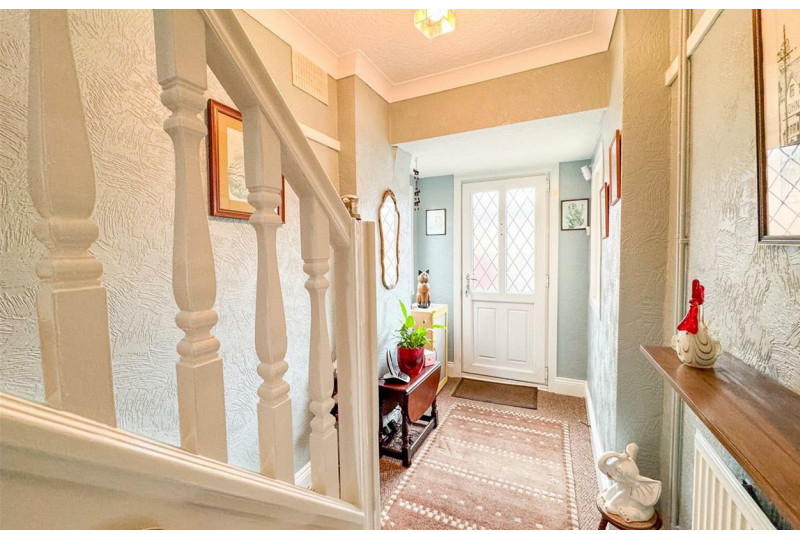


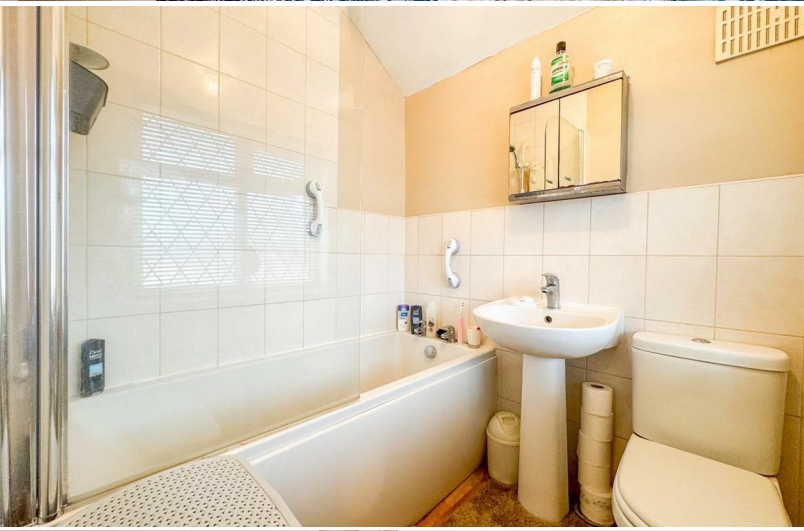




by a large window facing the rear of the property. The master bedroom is a generously sized double featuring plenty of fitted wardrobe space and a large bay window overlooking Melton Road. Additionally, the master bedroom boasts its very own ensuite bathroom with a full-size fitted bath, mixer shower, glass shower screen, pedestal basin, and freestanding toilet, all complemented by white tiling.

Bedroom two is another spacious double bedroom adorned with characterful cast iron features and offering ample space for a large wardrobe and king-size bed. Bedroom three, a single room, provides versatile space ideal for a smaller bedroom, office space, or even a walk-in wardrobe.



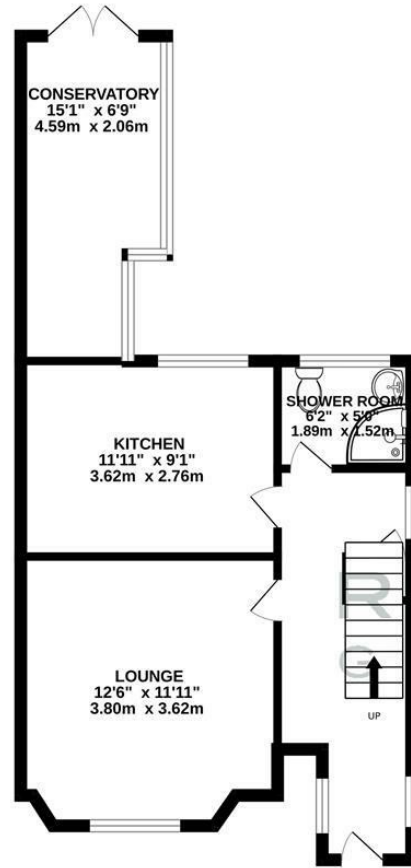


Outside, the beautifully kept garden awaits, adorned with established shrubs, a patio seating area, and a large lawn split by a path leading to the bottom of the garden where you'll find a greenhouse, a shed, and access to the alleyway at the rear of the property.

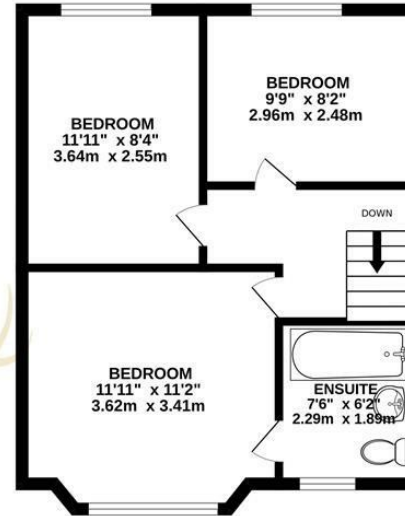
Thurmaston Village offers a pleasant environment with excellent access to local amenities, including the Thurmaston Shopping Centre, a large Asda superstore, as well as an array of local shops, restaurants, and pubs.



GROUND FLOOR



1ST FLOOR



REZIDE
GROUP

Whilst every attempt has been made to ensure the accuracy of the floorplan contained here, measurements of doors, windows, rooms and any other items are approximate and no responsibility is taken for any error, omission or mis-statement. This plan is for illustrative purposes only and should be used as such by any prospective purchaser. The services, systems and appliances shown have not been tested and no guarantee as to their operability or efficiency can be given.
Made with Metropix ©2024

