



REZIDE
GROUP



DANVERS ROAD, MOUNTSORREL,
ASKING PRICE £300,000



Welcome to Danvers Road, where Victorian charm meets modern comfort in the heart of Mountsorrel. This captivating semi-detached Victorian style villa boasts three spacious bedrooms, two large reception rooms, off-road parking, a garage, private garden and a host of delightful features that make it the perfect place to call home.



As you step through the entrance hall, adorned with original Minton tiled flooring and Victorian-style accents, you're greeted by an atmosphere of timeless elegance. The dining room, with its painted floorboards and ample natural light, sets the stage for memorable gatherings, while the adjoining lounge area beckons with a beautiful original fireplace and large windows that flood the space with warmth and light.

The kitchen is a cook's delight, featuring contemporary blue cabinets, marble-effect worktops, and plenty of space for culinary creativity. A large pantry cupboard adds convenience, space for a small dining table offers the perfect spot for morning coffee or casual meals.





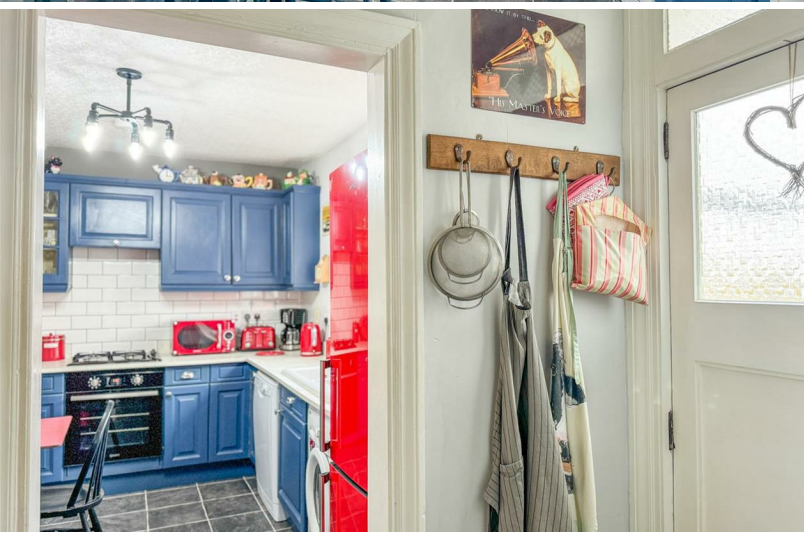


Upstairs, a spacious landing leads to three inviting bedrooms, each offering its own unique charm and versatility. The master bedroom, with its generous proportions and fitted wardrobes, provides a tranquil retreat, while the second bedroom boasts integrated storage and views of the lush rear garden.

Outside, the property continues to impress with off-road parking for at least two cars, a garage for added convenience, and a charming garden oasis complete with brick-built amenities, a patio seating area, and a summer house shed – perfect for outdoor entertaining or simply unwinding amidst nature's beauty.







Ideally situated in the heart of Mountsorrel, this property offers easy access to local amenities, including shops, pubs, and picturesque countryside walks. With its proximity to Riverside walks and convenient bus routes to Loughborough and Leicester, Danvers Road truly offers the best of both worlds – a peaceful retreat with the vibrancy of urban life just moments away.

Don't miss your chance to make this enchanting Victorian villa your own – schedule a viewing today and discover the timeless allure of Danvers Road.









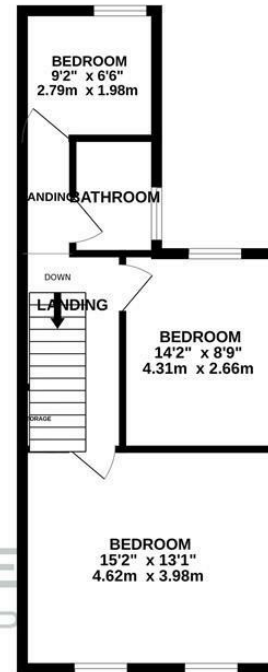
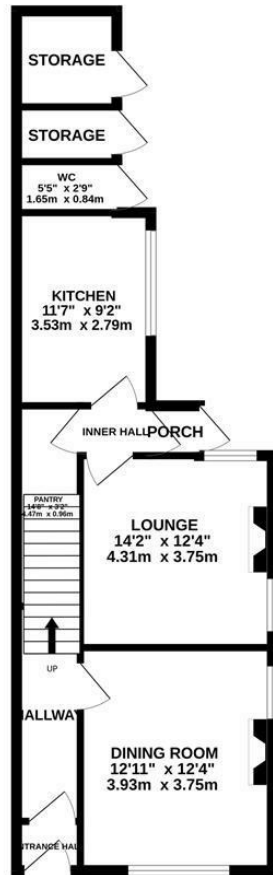






GROUND FLOOR
464 sq.ft. (43.1 sq.m.) approx.

1ST FLOOR
405 sq.ft. (37.6 sq.m.) approx.



TOTAL FLOOR AREA : 868 sq.ft. (80.7 sq.m.) approx.

Whilst every attempt has been made to ensure the accuracy of the floorplan contained herein, measurements of doors, windows, rooms and any other items are approximate and no responsibility is taken for any error, omission or mis-statement. This plan is for illustrative purposes only and should be used as such by any prospective purchaser. The services, systems and appliances shown have not been tested and no guarantee as to their operability or efficiency can be given.

Made with Metropix ©2024

